

PROGRAM

THE FIRST CONFERENCE OF

IASUR

INTERNATIONAL ALLIANCE FOR SUSTAINABLE
URBANIZATION AND REGENERATION

Kashiwa, Japan

“SUSTAINABLE SOCIETY AS OUR CHALLENGE”

October 24-27, 2014

*Organizing Committee of
The First Conference of IASUR*
www.iasur.org

Welcome to the IASUR Conference

In the 21st century, the rapid urbanization, high density growth, urban sprawl and slums, as well as increasing informality in urban activities, are still the major challenges for most Asian cities and regions. In response to these issues which aimed to establish how engineering, including civil engineering, environmental engineering, architecture and urban planning, can make significant contributions to the resolution of the increasingly severe problems caused by global warming, environmental pollution and urban vulnerability, and to the realization of sustainable cities and regions in Asia, we came to recognize the importance of promoting new paradigms and methodologies. At the same time we recognized the limitation of individual activities in research and education to solve complicated environmental issues.

Following the Agenda of the International Workshop in December 2012 at The University of Tokyo, Japan, we are going to establish an international alliance in order to form an international and interdisciplinary network connecting universities and research institutions toward a solution to sustainable urbanization and regeneration based on the accumulated education and research achievements and experiences of universities in Asia and other regions. This international conference that is going to be initiatively organized by the Organizing Committee for International Alliance for Sustainable Urbanization and Regeneration (IASUR) will be a memorable event to the launch of the new alliance as well as a remarkable opportunity to exchange the up-dated information and ideas.

The main theme of this conference is "Sustainable Society as Our Challenge". We have to steer the directionality for sustainable urban regeneration or urbanization so that it is repositioned within the scope of, and the capacity for, urban and regional sustainability through a process of continuous international collaboration. We have great expectations that this new alliance will make a significant contribution in further developing and raising the academic status of research and education for the future of Asian cities and regions.

Atsushi DEGUCHI

Chair, Organizing Committee of the First Conference of International Alliance for Sustainable Urbanization and Regeneration (IASUR)
Professor, Department of Socio-Cultural Environmental Studies, Graduate School of Frontier Sciences, The University of Tokyo

ORGANIZING COMMITTEE

Chairman

Atsushi DEGUCHI, Professor, Graduate School of Frontier Sciences, The University of Tokyo
<http://udcx.k.u-tokyo.ac.jp/Top.html>

Members

Hitoshi IEDA, Professor, School of Engineering, The University of Tokyo
<http://www.trip.t.u-tokyo.ac.jp/>

Eiji HATO, Professor, School of Engineering, The University of Tokyo
<http://bin.t.u-tokyo.ac.jp/>

Hironori KATO, Professor, School of Engineering, The University of Tokyo
http://intl.civil.t.u-tokyo.ac.jp/index_e.html

Shuichi MATSUMURA, Professor, School of Engineering, The University of Tokyo
<http://www.buildcon.arch.t.u-tokyo.ac.jp/index.html>

Yasunori AKASHI, Professor, School of Engineering, The University of Tokyo
<http://www.akashi-lab.jp/>

Toshio OTSUKI, Professor, School of Engineering, The University of Tokyo
<http://keikaku.arch.t.u-tokyo.ac.jp/>

Junichiro OKATA, Professor, School of Engineering, The University of Tokyo
<http://up.t.u-tokyo.ac.jp/>

Aya KUBOTA, Professor, School of Engineering, The University of Tokyo
<http://td.t.u-tokyo.ac.jp/>

Akito MURAYAMA, Associate Professor, School of Engineering, The University of Tokyo
<http://up.t.u-tokyo.ac.jp/~murayama/>

Hidetoshi OHNO, Professor, Graduate School of Frontier Sciences, The University of Tokyo
http://kingo.t.u-tokyo.ac.jp/ohno/po/ohno_eng.html

Riki HONDA, Professor, Graduate School of Frontier Sciences, The University of Tokyo
http://intl.civil.t.u-tokyo.ac.jp/honda_e.html

Yoshiyuki KAWAZOE, Associate Professor, Institute of Industrial Science, The University of Tokyo
<http://www.kwz.iis.u-tokyo.ac.jp/index.html>

Shichen ZHAO, Associate Professor, Graduate School of Human-Environmental Studies, Kyushu University
<http://z-lab.arch.kyushu-u.ac.jp/default.htm>

Tsuneaki FUKUI, Professor, Faculty of Engineering and Design, Hosei University
<http://fukuilab.wordpress.com/>

Noriko AKITA, Associate Professor, Graduate School of Horticulture, Environmental Science and Landscape Architecture, Chiba University
<https://sites.google.com/site/akitalabo/>

Daisuke ABE, Associate Professor, Faculty of Policy Science, Ryukoku University
<http://www.ryukoku.ac.jp/who/detail/186685/>

Norihisa SHIMA, Associate Professor, Faculty of Regional Development Studies, Toyo University
<http://www.toyo.ac.jp/site/english-rds/>

Secretariat

Junhwan SONG, Project Researcher, Graduate School of Frontier Sciences, The University of Tokyo

Tomoko MORI, Project Researcher, Research Center for Advanced Science and Technology, The University of Tokyo

CONFERENCE PROGRAM

October 24(Friday) Welcome Party
25(Saturday) Day 1: Opening Session, Keynote Speech, Presentation Sessions
26(Sunday) Day 2: Presentation Session, Closing Session
27(Monday) Technical Tour

REGISTRATION FEE

Presenter (General) : JPY10,000.- / Presenter (Student): JPY5,000.- (including Proceedings CD)

Participants: Free

Proceedings CD: JPY1,000.-

CONFERENCE VENUE

Mitsui Garden Hotel Kashiwanoha

178-4 Wakashiba, Kashiwa City, Chiba, 227-0871, Japan

English <http://www.gardenhotels.co.jp/eng/kashiwanoha/>

Japanese <http://www.gardenhotels.co.jp/kashiwanoha/appeal/gate-square/>

ACKNOWLEDGEMENT

Co-Organizer: International Society of Habitat Engineering and Design

School of Engineering, The University of Tokyo

Graduate School of Frontier Sciences, The University of Tokyo

Urban ReDesign Studies Unit, The University of Tokyo

Urban Design Center, Kashiwanoha (UDCK)

Official Sponsors: The Kajima Foundation

Mitsui Fudosan Co., Ltd.

Nominal Supporters: Architectural Institute of Japan

Japan Society of Civil Engineers

The City Planning Institute of Japan

Kashiwa City, Japan

PROGRAM

Friday 24 Oct

16:00-18:00 Registration Open (at Hotel Lobby)

18:00-20:00 Welcome Reception (at Oak Village Kashiwa-no-ha)

Saturday 25 Oct

8:30 Registration Open

9:30-11:50 Opening Session

9:30- 9:45 Welcome Address by Prof. Atsushi DEGUCHI (Chair, IASUR Conference Organizing Committee)

Prof. Nobuo TAKEDA (Dean, Graduate School of Frontier Sciences, UTokyo)

9:45-10:15 Keynote Speech by Prof. Hidetoshi OHNO (UTokyo)

10:15-10:45 Keynote Speech by Prof. Zhenwei PENG (Tongji Univ.)

10:50-11:50 Panel Discussion "Challenges toward Sustainable Society"

Prof. Benito M. PACHECO (Philippines), Dr. Niramom KULSRISOMBAT (Thailand)

Prof. Kuang- Hui PENG (Taiwan), and Prof. Jung-Hyung LEE (Korea)

11:50-13:30 Commemorative Photograph / Lunch Break

12:00-13:00 Poster Presentation

13:30-17:45 Afternoon Sessions: Oral Presentation

13:30-15:20 Session 1 / Session 2

15:20-15:35 Coffee Break

15:35-17:45 Session 3 / Session 4

(18:00-19:00 Board Meeting)

Sunday 26 Oct

9:30 Registration Open

10:00-11:55 Morning Sessions: Oral Presentation

10:00-11:55 Session 5 / Session 6

11:55-13:00 Lunch Break

13:00-16:40 Afternoon Sessions: Oral Presentation

13:00-14:10 Session 7 / Session 8

14:10-16:20 Session 9 / Session 10

16:20-16:40 Coffee Break

16:40-19:00 Closing Session

16:40-16:55 Keynote Speech by Prof. Bin LU (Peking Univ.)

16:55-17:10 Keynote Speech by Assistant Prof. Muhammad Sani Roychansyah (Gadjah Mada Univ.)

17:10-18:50 Panel Discussion "Looking Toward the Future of IASUR"

18:50-19:00 Closing Remarks by Prof. Atsushi DEGUCHI (Chair, IASUR Conference Organizing Committee)

Prof. Bin LU (Peking Univ.)

19:00-20:00 Farewell Party and Award Announcement

Monday 27 Oct

Technical Tour (9:00 to 13:00)

Guided to UDCK, Kashiwa-no-ha smart city and Suburban Development Site in Tokyo Metropolitan Areas

OPENING SESSION

9:30-11:50, October 25, Hall

Welcome Address:

Atsushi DEGUCHI

Chair, Organizing Committee of the First Conference of International Alliance for Sustainable Urbanization and Regeneration
Professor, Graduate School of Frontier Sciences, The University of Tokyo

Nobuo TAKEDA

Dean, Graduate School of Frontier Sciences, The University of Tokyo

Keynote Speech:

Hidetoshi OHNO

Professor, Graduate School of Frontier Sciences, The University of Tokyo

Zhenwei PENG

Professor, College of Architecture and Urban Planning, Tongji University

Panel Discussion “Challenges toward Sustainable Society”

Panelists

Benito M. PACHECO (Philippines)

Professor, Vice-Chancellor for Academic Affairs, University of the Philippines Diliman

Kuang- Hui PENG (Taiwan)

Professor, Graduate Institute of Architecture and Urban Design, National Taipei University of Technology

Niramon KULSRISOMBAT (Thailand)

Director, Urban Design and Development Center (UddC)

Assistant Professor, Department of Urban and Regional Planning, Faculty of Architecture, Chulalongkorn University

Jung-Hyung LEE (Korea)

Professor, School of Architecture and Building Science, Chung-Ang University

Coordinator

Atsushi DEGUCHI,

Chair, Organizing Committee of the First Conference of International Alliance for Sustainable Urbanization and Regeneration
Professor, Graduate School of Frontier Sciences, The University of Tokyo

POSTER PRESENTATION, October 25

Poster Session

12:00-13:00, Oct.25, Hall

P-1 An Analytical Study on the Effect of Loading Tip Shapes on Collapse Modes in Vacant Steel Tubular Members Subjected to Concentrated Lateral Load

Mahmud Kori Effendi

Graduate School of Human-Environment Studies, Kyushu University, Japan

P-2 Space Resources Planning and Design of Rail Transit Station in Chongqing

Hong Yuan

Faculty of Architecture, Southwest Jiao-tong University, China

P-3 Mixed Traffic Flow- A Necessity or a Challenge for Advanced Urban Mobility in Developing Countries: Case Study of Lahore City (Pakistan)

Saadia Tabassum

Graduate School of Urban Innovation, Yokohama National University, Japan

P-4 Development Direction for Future Cities: Evolution of Transportation and Communication Patterns in Intelligent City

Zhezhen Zhang

School of Architecture, Tianjin University, China

P-5 Avant-garde Architecture Movement of Last Century and Contemporary Urban Design Approach

Sheng Dang

School of Architecture, Tianjin University, China

P-6 Study on Drivers and Impacts of Land Use Change in Metropolitan Region: Case Study of Jakarta Metropolitan Region, Indonesia

Dyah Fatma

Graduate School of Frontier Sciences, The University of Tokyo, Japan

P-7 New Strategy & Urban Management on Nimmanhaemin Street Network, Chiang Mai Thailand

Chiranthanin Kitika

Department of Architecture and Design, Kyoto Institute of technology, Japan

P-8 Practical Research of Urban Redesign with Multidisciplinary Collaboration -The Studio "Tokyo 2060"

Chie Kodama

Graduate School of Engineering, The University of Tokyo, Japan

P-9 The Design Direction of the "Healing Space" for Undergraduate Students

Young-joo Lee

School of Architecture, Soongsil University, South Korea

P-10 The study on the Indicators for the Affordable Housing in Deteriorated Residential Areas

Jongyong Lim

School of Architecture, Soongsil University, South Korea

P-11 Critical Issues of Makassar Urban Forest Development

Dermayana Aرسال

Faculty of Built Environment, University Technology Malaysia, Malaysia

P-12 Study on Information Density of the Street in Commercial Area – With Streetscape Simulation Using the Exchange Test in Shimokitazawa –

Mayo Sonetaka

Graduate School of Science and Technology, Meiji University, Japan

P-13 Educational Program of Redesign – The Case of Han Shin Awaji Earthquake Disaster

Saori Imoto

Graduate School of Engineering, The University of Tokyo, Japan

P-14 Establishment of CAS-Net JAPAN

Takayuki Nakamura

Fukushima National College of Technology, Japan

P-15 A Study for the Framework of Assessment System on Sustainable Campus

Takao Ozasa

Faculty of Engineering, Hokkaido University, Japan

ORAL PRESENTATION, October 25

Session 1: 13:30-15:20, Oct.25, Session Room1

Coordinator - Dr. Hiroshi SAKAI, The University of Tokyo

Theme A: Cities and Climate Change

Theme B: Environmental Engineering and Management

Theme A: Cities and Climate Change

1-1 Evaluation and Redefinition of Open Spaces in Neighborhoods of Hot Arid Region

- Case of Jeddah City, Kingdom of Saudi Arabia -

Rahif Abdulqader H Maddah

Graduate School of Frontier Sciences, The University of Tokyo, Japan

1-2 Carbon Stock of *Macaranga gigantia* and *Adinandra dumosa* in Universiti Teknologi Malaysia (UTM) Green Area

Nurun Nadhirah Md Isa

Faculty of Built Environment, University Technology Malaysia, Malaysia

1-3 Investigating the GHG Inventory Method for the Local Scale in Japan: Problems and Suggestions

Ruixi Zhao

Graduate School of Asia Pacific Studies, Ritsumeikan Asia Pacific University, Japan

1-4 How does Built Environment Influence Household Energy Consumption in a Developing Megacity? : Evidence from the Jakarta Metropolitan Area

Yuki Takada

Graduate School of Engineering, The University of Tokyo, Japan

1-5 Sensitivity analysis of Damages around Katsushika Ward, Tokyo, Dependent on Locations of Levee Breach along the Arakawa River

Yusuke Yamanaka

Graduate School of Engineering, The University of Tokyo, Japan

1-6 Development of a Concept of Resilient City and Indicators for Resilient Assessment

Kenshi Baba

Center for Regional Research, Hosei University, Japan

Theme B: Environmental Engineering and Management

1-7 Analyze of the cause of city haze and the consequent thinking

Zhigang Wang

Faculty of Architecture and Urban Planning, Chongqing University, China

Q & A / Discussion

Session 2: 13:30-15:20, Oct.25, Session Room 2

Coordinator - Dr. Akito Murayama, The University of Tokyo

Theme E: Space, Time and Cultural Context

Theme E: Space, Time and Cultural Context - 1

2-1 Neighbourhood Open Space's Attachment and Utilization Characteristics among Ethnic Groups in Rural Community of South-West Nigeria

Oluwagbemiga Paul Agboola

Faculty of Built Environment, University Technology Malaysia, Malaysia

2-2 An Attempt to Conserve "Regionalism" in its Landscape by Evaluating its Spatial Structure

Tomoko Mori

Research Center for Advanced Science and Technology, The University of Tokyo, Japan

2-3 The Characteristic of Selling Space in Fresh Markets in Chiangmai, Thailand

Pandin Ounchanum

Faculty of Architecture, Chiang Mai University, Thailand

2-4 Study of the Residential Principal-space-division Method Observed in the 19th Century Paris Urban Residences -Analytical Approach from the Principal-space Division and Composition Method of Japanese Architecture-

Eri Ohara

Graduate School of Science and Technology, Meiji University, Japan

2-5 Study on the Activities of Aneyakoji Area Association: Local Autonomy in Kyoto

Kumi Eguchi

Graduate School of Human and Environmental Studies, Kyoto University, Japan

2-6 Cultural Heritage Conservation on the Industrial Mining Landscape Transformations: A Case of Taiping in Perak state, Malaysia

Lee Yoke Lai

Graduate School of Engineering, The University of Tokyo, Japan

Q & A / Discussion

Session 3: 15:35-17:45, Oct.25, Session Room 1

Coordinator - Dr. Noriko AKITA, Chiba University

Theme C: Green and Blue Network

Theme D: Transportation and Communication

Theme C: Green and Blue Network

3-1 Recommendations for Contextualization of Urban Biodiversity Conservation in Singapore, Tokyo and Vancouver: Species Richness and Habitat-type Irreplaceability

Khew Yu Ting Joanne

Graduate School of Frontier Sciences, The University of Tokyo, Japan

3-2 Classification of Matrix Units based on Micro Topography for Environmental Planning –Case study of Nagoya –

Chika Takatori

Graduate School of Environmental Studies, Nagoya University, Japan

3-3 Proposal of Indexes of Openness and Compactness of Non-built-up Areas Related to Green Coverage of City Blocks –Case Study of Nagoya City–

Hiroyuki Shimizu

Graduate School of Environmental Studies, Nagoya University, Japan

3-4 The Analysis of Land Use Characteristics Using the Indexes of Openness and Compactness of Non-built up Areas Related to Green Coverage of City Blocks

Nobuko Kawaguchi

Graduate School of Environmental Studies, Nagoya University, Japan

3-5 An Analytical Approach Toward Future Neighborhood Green Corridor for Enhancing Walkability in the Context of World Heritage Site - Malacca, Malaysia

Kei Saito

Faculty of Built Environment, University Technology Malaysia, Malaysia

3-6 Barriers to Participation in Neighbourhood Public Space Maintenance

Nadzirah Jausus

Faculty of Built Environment, University Technology Malaysia, Malaysia

Theme D: Transportation and Communication

3-7 An Evaluation of New Transit System from Viewpoint of Institutional Framework (Case Studies: Jogjakarta and Palembang)

Aleksander Purba

Graduate School of Urban Innovation, Yokohama National University, Japan

3-8 The Future Self Drive Tourism in ASEAN: An Overview

Safizahanin Mokhtar

Department of Tourism Sciences, Tokyo Metropolitan University, Japan

Q & A / Discussion

Session 4: 15:35-17:45, Oct.25, Session Room 2

Coordinator - Dr. Kosei HATSUDA, The University of Tokyo

Theme E: Space, Time and Cultural Context

Theme E: Space, Time and Cultural Context - 2

4-1 Implication of Cultural Practices on Hospital Ward Setting in Nigeria

Ibrahim Abubakar Alkali

Faculty of Built Environment, University Technology Malaysia, Malaysia

4-2 Fund Revolving Socialized Housing Program for Sustainable Community Development to Achieve Millennium Development Goals

Yuko Kobayakawa

Faculty of Regional Development Studies, Toyo University, Japan

4-3 Cultural Landscape Value and Spatial Representation of Trees in a Rural Nupe Community of Nigeria

Isa Bala Muhammad

Faculty of Built Environment, University Technology Malaysia, Malaysia

4-4 A Bangkok Shophouse Flexible Factor Comparison between Shophouse Residents and Architects

Chamnarn Tirapas

Graduate School of Science and Technology, Kyoto Institute of Technology, Japan

4-5 Interpreting Landscape Constructions to Solve Tensions with Sustainable Planning Procedures: The Case of Bilbao's Hillside Open Spaces and Orchards

Maider Uriarte

Architecture Department, University of the Basque Country, Spain

4-6 The Study on the Transformable Communication Space Considering Nomadic Behavior

Jeongho Yang

School of Architecture, Soongsil University, South Korea

4-7 Influence of Public Art on People Attachment towards Space in Heritage City, Georgetown, Penang

Yeo Lee Bak

Faculty of Built Environment, University Technology Malaysia, Malaysia

Q & A / Discussion

ORAL PRESENTATION, October 26

Session 5: 10:00-11:55, Oct.26, Session Room 1

Coordinator - Dr. Ryoma KITAGAKI, The University of Tokyo

Theme F: Structural Engineering and Infrastructure Planning

Theme G: Green Building and Urban Technology

Theme F: Structural Engineering and Infrastructure Planning

5-1 Improving Site-specific Ground Motion Estimates through Fault-site Modeling with High Resolution

Pher Errol Balde Quinay

Research Institute for Natural Hazards and Disaster Recovery, Niigata University, Japan

5-2 Numerical Convergence Analysis of Three-dimensional Nonlinear Earthquake Wave Amplification Simulation

Kohei Fujita

RIKEN Advanced Institute for Computational Science & Japan Society for the Promotion of Science, Japan

5-3 Seismic Performance Evaluation of a Curved Rigid-frame Bridge Including Non-structural Components Using Three Dimensional Nonlinear Dynamic Analysis

Tomoaki Takeda

Graduate School of Engineering, The University of Tokyo, Japan

Theme G: Green Building and Urban Technology

5-4 Research on the Green-roof Renovation Strategy of Existing Buildings in the Changjiang River Basin of China

Tiejun Zhou

Faculty of Architecture and Urban Planning, Chongqing University, China

5-5 Natural Ventilation in High-Rise Residential Buildings in Hot and Humid Climate: Malaysia as a Case Study

Tareq G. Farea

Faculty of Built Environment, University Technology Malaysia, Malaysia

5-6 Study on Construction Systems and People Concern with Heat Insulation Improvement of Windows

Chihori Kaneko

Graduate School of Frontier Sciences, The University of Tokyo, Japan

5-7 Smart Technique Based Urban Low-Carbon Information Governance System and Its Construction Method

Siyu Wang

School of Architecture, Tianjin University, China

Q & A / Discussion

Session 6: 10:00-11:55, Oct.26, Session Room 2

Coordinator - Dr. Norihisa SHIMA, Toyo University

Theme J: Planning, Design and Engineering for Dynamism of Society

Theme J: Planning, Design and Engineering for Dynamism of Society - 1

6-1 A Costing Spreadsheet to Support Spatial Planning

Hisatoshi Ai

Faculty of Tourism Science, Tokyo Metropolitan University, Japan

6-2 Dying City, Resurrecting City: Tackling Urban Shrinkage in Pittsburgh and Manchester

Fernando Ortiz-Moya

Graduate School of Engineering, The University of Tokyo, Japan

6-3 Transformation of Industrial Cities and Sustainable Development: Industrial Characteristic and Demographic Changes of Industrial Cities in US, Japan, and Korea

Hyun Young Ryu

Graduate School of Frontier Sciences, The University of Tokyo, Japan

6-4 Pseudo-urbanization in Cairo Region: Quantifying Informal Urban Sprawl with Geo-spatial Indices

Tahar Osman

Graduate School of Human-Environment Studies, Kyushu University, Japan

6-5 Study about Possibility of Social Factors in Technology Diffusion in Bangladesh - "Focusing on Technical Stakeholder"

Rumiko Sasaki

Graduate School of Frontier Sciences, The University of Tokyo, Japan

6-6 Gentrification and Its Socio-Economic Implications in Iskandar Malaysia

Foziah Johar

Faculty of Built Environment, University Technology Malaysia, Malaysia

6-7 Feature of Single-person Household and Urban-Life-Housing in Korea

Dongki Hong

Graduate School of Human-Environment Studies, Kyushu University, Japan

6-8 Feminization of Cities, the Sustainability of the Societies of Population Decline

Reiko Hayashi

National Institute of Population and Social Security Research Japan

Q & A / Discussion

Session 7: 13:00-14:10, Oct.26, Session Room 1

Coordinator - Dr. Christian DIMMER, The University of Tokyo

Theme H: Policy and Evaluation

Theme H: Policy and Evaluation

7-1 Location and Development Control of Wind Farms in Japan

Ken Niitani

City and Regional Planning, Nihon Sekkei Inc., Japan

7-2 The Evolutionary Concept of Neighborhood Planning: Benefits and Opportunities for Integrating Sustainability Assessment into Neighborhood (Re)development Plans

Ayyoob Sharifi

Global Carbon Project-Tsukuba International Office, National Institute for Environmental Studies, Japan

7-3 Knowledge Integration between Urban Planning and Landscape Architecture in Contributing to a Better Neighbourhood Open Space: A Policy Review

S. Yasmin Sofia Hussain

Faculty of Built Environment, University Technology Malaysia, Malaysia

7-4 Evaluation on the Urbanization Path of China's Cities: 1990-2010

He Li

Graduate School of Human-Environment Studies, Kyushu University, Japan

Q & A / Discussion

Session 8: 13:00-14:10, Oct.26, Session Room 2

Coordinator - Dr. Atsushi DEGUCHI, The University of Tokyo

Theme J: Planning, Design and Engineering for Dynamism of Society

Theme J: Planning, Design and Engineering for Dynamism of Society - 2

8-1 Transition and Outcome Evaluation of Street Improvement Projects in Seoul City, Korea

Junhwan Song

Graduate School of Frontier Sciences, The University of Tokyo, Japan

8-2 Differences of Street Connectivity between Old and New Zone in Malaysian Small Town

Wan Saiful Nizam Wan Mohamad

Faculty of Built Environment, University Technology Malaysia, Malaysia

8-3 Reclaiming Urban Streets: Comparative Analysis of Planning Process, Cost and Technical Standards of "Parklets" in San Francisco and Los Angeles

Mari Watanabe

Graduate School of Environmental Studies, Nagoya University, Japan

8-4 Occupancy of Teenagers in Shopping Malls in Klang Valley, Malaysia

Noorliyana Ramlee

Faculty of Built Environment, University Technology Malaysia, Malaysia

Q & A / Discussion

Session 9: 14:10-16:20, Oct.26, Session Room 1

Coordinator - Dr. Aya KUBOTA, The University of Tokyo

Theme I: Reconstruction and Rehabilitation after Disaster

Theme I: Reconstruction and Rehabilitation after Disaster

9-1 Evacuation Preparedness as a Key Element for a Sustainable Urban Development: A Tsunami Evacuation Simulation Tool and Its Demonstrative Applications

Leonel Aguilar

Graduate School of Engineering, The University of Tokyo, Japan

9-2 Evacuation Time Simulation in Typical Chinese Residential Quarter Using an Iteration Model

Daqiang Wang

Graduate School of Human-Environment Studies, Kyushu University, Japan

9-3 A Quantitative Analysis of Community Resilience towards Flooding in Thailand

Sayamon Saiyot

Graduate School of Urban Innovation, Yokohama National University, Japan

9-4 Recovery of the Scenery in FUKUSHIMA-The Theory and Proposal for Recovery Design-

Haruna Izutani

Graduate School of Engineering, The University of Tokyo, Japan

9-5 Study on Utilization of Regional Builders for Post-Disaster Housing - A Case Study of the Construction Project of Temporary Houses in Iwate Prefecture after the 2011 Tohoku Earthquake and Tsunami -

Shiro Watanabe

Faculty of Engineering Division 1, Tokyo University of Science, Japan

9-6 Performative Community Mapping for Social Resilience: Visualising Collaborative Ties and Social Capital between Recovery Initiatives in Post-Disaster Ishinomaki

Christian Dimmer

Research Center for Advanced Science and Technology, The University of Tokyo, Japan

Q & A / Discussion

Session 10: 14:10-16:20, Oct.26, Session Room 2

Coordinator - Dr. Saori IMOTO, The University of Tokyo

Theme J: Planning, Design and Engineering for Dynamism of Society

Theme J: Planning, Design and Engineering for Dynamism of Society - 3

10-1 An Urban Design Method Led by the Concept of Mixed Land Use: A Case Study of the Central District in Junliangcheng Town, Tianjin, China

Peng Qin

School of Architecture, Tianjin University, China

10-2 Challenges and Countermeasures of Slums

Yu Zheng

School of Architecture, Tianjin University, China

10-3 Play Intervention in Hospital Ward Towards Recovery of Hospitalized Children

Usman Bukar Wakawa

Faculty of Built Environment, University Technology Malaysia, Malaysia

10-4 Households Opinion on the Source Segregation of Municipal Solid Waste in Urban Areas

Azilah Mohamed Akil

Faculty of Built Environment, University Technology Malaysia, Malaysia

10-5 Participatory Governance and Sustainable Development: The Use of Participatory Learning Workshop as a Case Study

Teruhiko Yoshimura

Department of International Welfare Development, Nihon Fukushi University, Japan

Q & A / Discussion

CLOSING SESSION

16:40-19:00, October 26, Hall

Keynote Speech

Bin LU

Professor, College of Urban and Environmental Sciences, Peking University

Muhammad Sani Roychansyah

Assistant Professor, Department of Architecture and Planning, Faculty of Engineering, Gadjah Mada University

Panel Discussion “Looking Toward the Future of IASUR”

Aim

The aim of the panel discussion “Looking Toward the Future of IASUR” is to briefly introduce the activities of former project researchers and research assistants of Center for Sustainable Urban Regeneration (2003-2013), The University of Tokyo, one of the origins of International Alliance for Sustainable Urbanization and Regeneration (IASUR), and discuss about the future activities of IASUR based on short presentations by researchers and specialists who have already started their intensive activities in Asia after graduating from cSUR. This discussion will be a foundation of the newly established “SUR Research Group” in IASUR, a group initiated by cSUR graduates but now open to all IASUR members.

Panelists

Satoshi Ishii

Senior Urban Development Specialist, Asian Development Bank

Junko Tamura

Visiting Senior Fellow, School of Design & Environment, National University of Singapore

Nattapong Punnoi

Lecturer, Department of Urban and Regional Planning, Faculty of Architecture, Chulalongkorn University

Norihisa Shima

Associate Professor, Department of Regional Development Studies, Toyo University

Tran Mai Anh

Consultant, Nikken Sekkei Research Institute

Coordinator

Akito Murayama

Associate Professor, Department of Urban Engineering, School of Engineering, The University of Tokyo

Closing Remarks

Atsushi DEGUCHI

Chair, Organizing Committee of the First Conference of International Alliance for Sustainable Urbanization and Regeneration

Professor, Graduate School of Frontier Sciences, The University of Tokyo

Bin LU

Professor, College of Urban and Environmental Sciences, Peking University

MEMO

Saturday, October 25, 2014

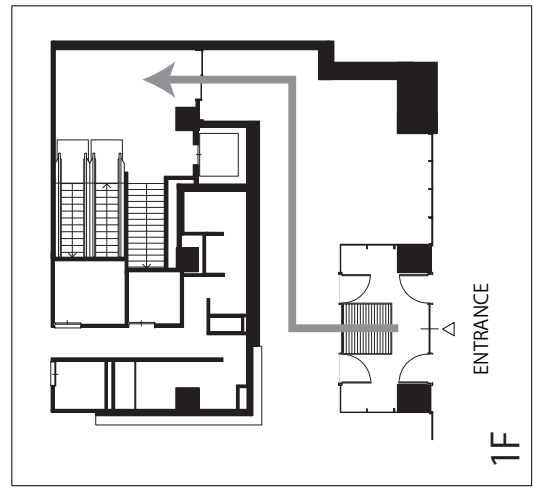
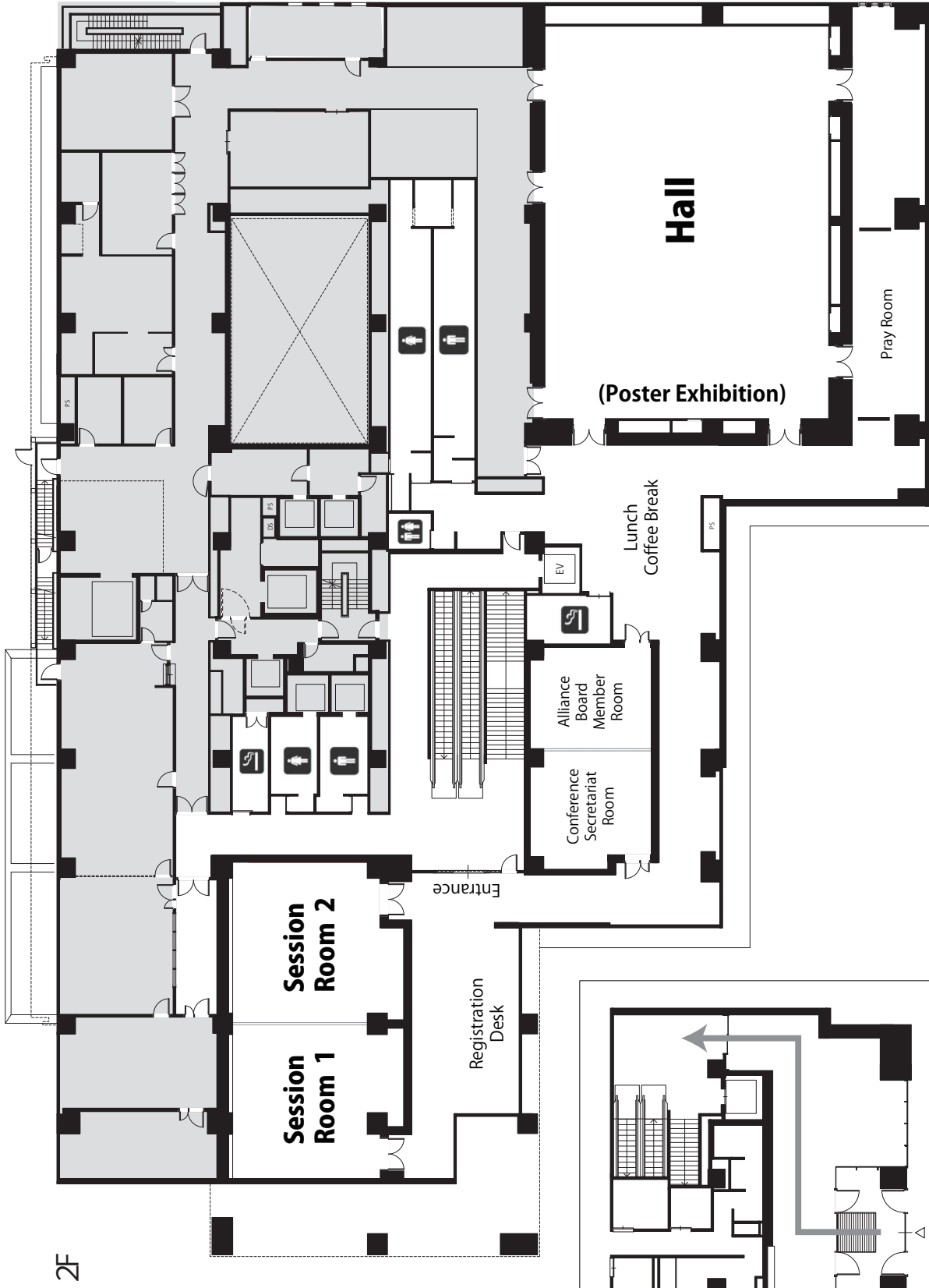
Room	8:00	9:00	10:00	11:00	12:00	13:00	14:00	15:00	16:00	17:00	18:00	19:00	20:00
Registration Desk			Registration Desk										
Room 1						Lunch	Session 1 Theme A: Cities and Climate Change Theme B: Environmental Engineering and Management		Session 3 Theme C: Green and Blue Network Theme D: Transportation and Communication				
Room 2							Session 2 Theme E: Space, Time and Cultural Context - 1		Session 4 Theme E: Space, Time and Cultural Context - 2				
Hall				Opening Session		Poster Presentation							

Sunday, October 26, 2014

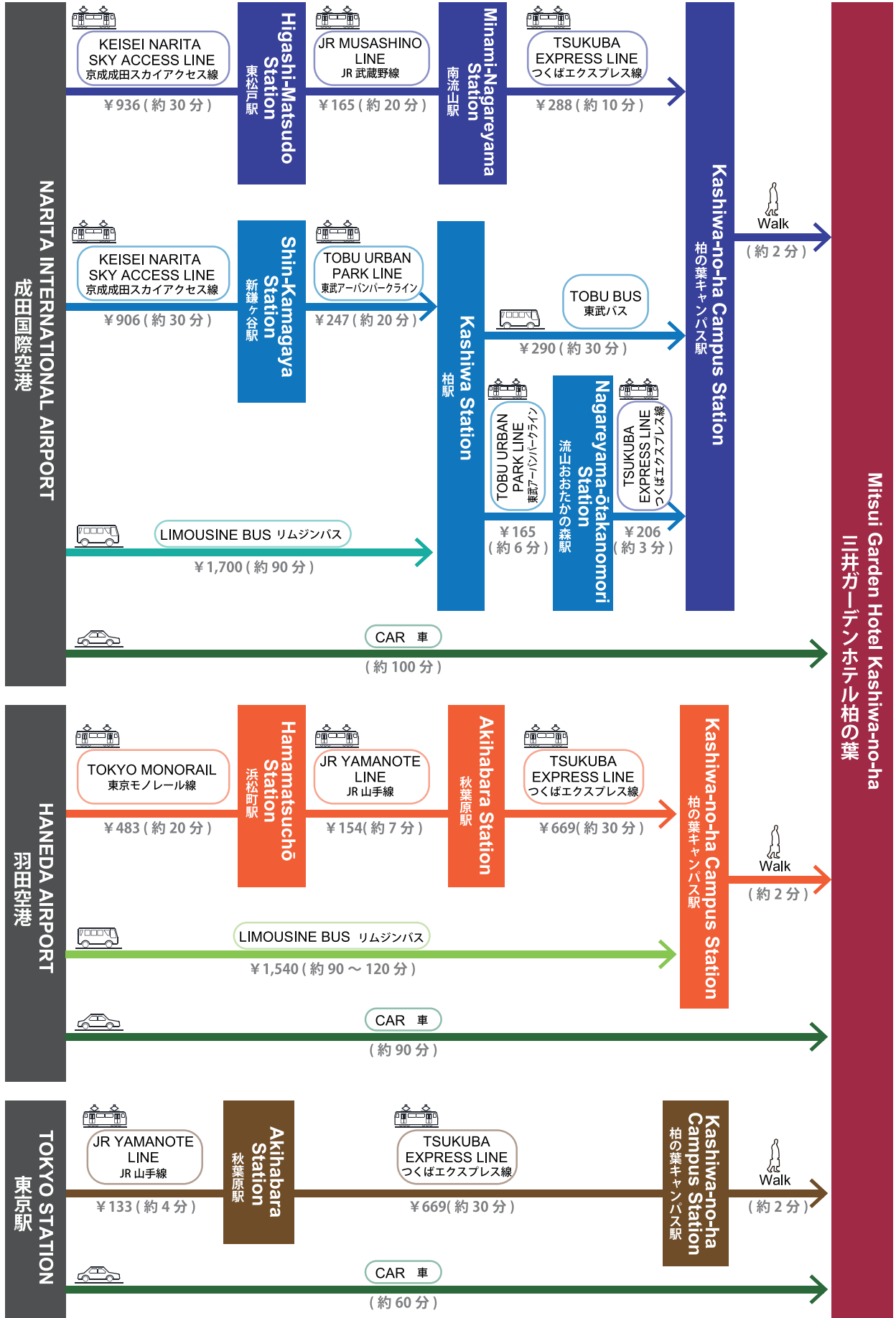
Room	8:00	9:00	10:00	11:00	12:00	13:00	14:00	15:00	16:00	17:00	18:00	19:00	20:00	
Registration Desk						Registration Desk								
Room 1						Lunch	Session 5 Theme F: Structural Engineering and Earthquake Engineering Theme G: Green Building and Urban Technology		Session 9 Theme H: Reconstruction and Rehabilitation after Disaster					
Room 2							Session 6 Theme J: Planning, Design and Engineering for Dynamism of Society - 1		Session 10 Theme J: Planning, Design and Engineering for Dynamism of Society - 3					
Hall												Closing Session	Farewell Party & Award Announcement	

Monday, October 27, 2014

	8:00	9:00	10:00	11:00	12:00	13:00
						Technical Tour



Transportation: Route from Airports and Railway Stations



Access Map

Mitsui Garden Hotel Kashiwa-no-ha / Kashiwa-no-ha Conference Center

148-2 Kashiwanoha Campus, 178-4 Wakashiba, Kashiwa City, Chiba, 277-0871
 Phone Number : +81-4-7134-3131

By Train | 2 mins walk from Kashiwanoha Campus Station (West Exit) on the Tsukuba Express Line

By Car | 5 mins drive from Kashiwa InterChange on the Joban Expressway

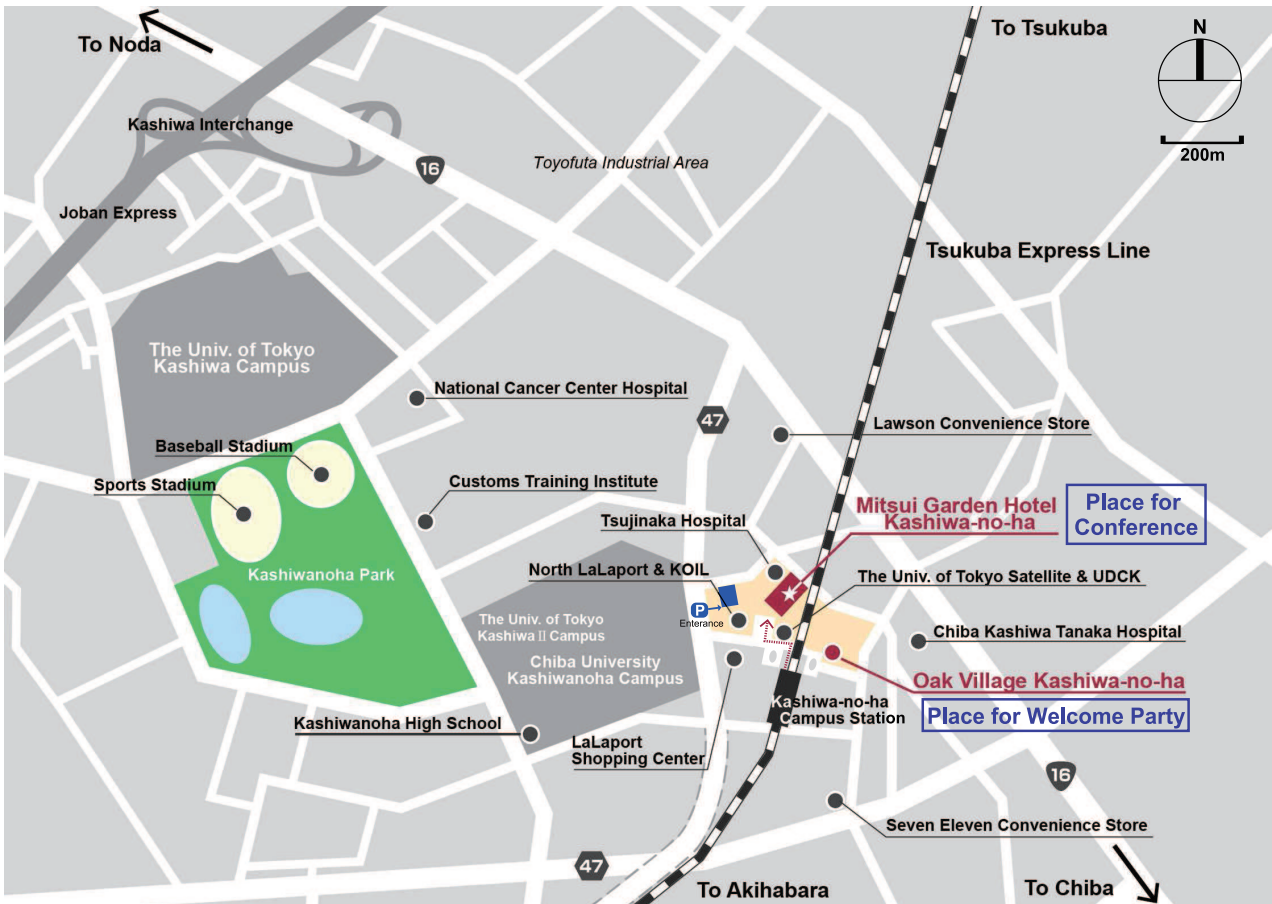
By Plane | **From Narita International Airport :**

- Approximately 70 mins by Train.
 (Keisei Narita Sky Access Line→JR Musashino Line→Tsukuba Express Line)
- Approximately 100mins by Limousine Bus to Kashiwa Station West Exit
 From Kashiwa Station take the Tobu Urban Park Line(Noda Line) to Nagareyama-ōtakanomori Station, then take the Tsukuba Express Line to Kashiwanoha Campus Station.

From Haneda Airport :

- Approximately 60 mins by Train.
 (Tokyo Monorail→JR Yamanote Line→Tsukuba Express Line)
- Approximately 90-120 mins by Limousine Bus to Kashiwa-no-ha Station West Exit.

Web Site | **Narita Express Line** →<http://www.jreast.co.jp/e/nex/index.html>
Keisei Narita Sky Access Line →<http://www.keisei.co.jp/keisei/tetudou/skyliner/us/>
Tsukuba Express Line →<http://www.mir.co.jp/en/>
Tokyo Monorail →<http://www.tokyo-monorail.co.jp/english/>
Narita International Airport - Kashiwa Station Limousine BUS
 →<http://homepage2.nifty.com/marua-S/kashinrt.htm>
Haneda Airport - Kashiwa Station or Kashiwa-no-ha Campus Station Limousine BUS
 →<http://www.tobu-bus.com/pc/kousoku/05.html>
Mitsui Garden Hotel Kashiwa-no-ha →<http://www.gardenhotels.co.jp/eng/kashiwanoha/>



Information Map around Kashiwanoha Campus Station



Eating & Drinking

Lunch & Dinner 🍴

- 1 LaLaport 3F (Restaurants & Foodcourt)
- 2 Salvatore 1F (Italian Food)
- 3 Agora 6F (Western Food)
- 4 Mitsui Garden Hotel Restaurant 1F (Italian Food)
- 5 Macdonald 1F (Hamburger)
- 6 Oakvillage Kashiwanoha 1F (Western/Italian Food)
- 7 Osaka Umeda Okonomiyaki 1F (Japanese style pancake with vegetables and ingredients)
- 8 Kourakuen Ramen 1F (Noodle)
- 9 Nagatsuma Restaurant 1F (Japanese-style set menu)
- 10 Menoh Ramen 1F (Noodle)

Cafe ☕

- 1 Tully's 3F
- 2 Cafe Kaldino 1F
- 3 Mister Donut 1F
- 4 Tully's 1F

Convenience Store 🏪

- 1 Family Mart 1F
- 2 Lawson 1F
- 3 Seven-Eleven 1F

Bar & Pub 🍸

- 1 LaLaport 3F
- 2 Salvatore 1F
- 3 Agora 6F
- 4 Mitsui Garden Hotel Restaurant 1F
- 5 Yamauchi Nōjo 1F & Uotami 2F
- 6 Oakvillage Kashiwanoha 1F
- 7 Domadoma 1F

